

# Ophelia's Place ANNUAL REPORT 2021-22





# A Year's Summary

## Reconnection & Care

One thing is for certain - the care for youth never wavers.

The community was coming out of its second year of the pandemic, and youth were feeling the impacts. Anxiety, depression, a lack of motivation and other signs of youth disconnection were showing up significantly.

So Ophelia's Place did what it does best - remained flexible. Youth needed to reconnect and recharge, especially during those important formative years. They needed to learn or relearn how to navigate social interaction while caring for themselves and each other.

Ophelia's Place re-opened its Eugene and Junction City locations to in-person services in smaller cohorts to keep the health and safety of girls at the forefront of decision making.

During the first half of 2022, the Albany community was introduced to Ophelia's Place after-school services, and announced it was opening a space in its downtown. By that summer, girls were joining us for Welcome Wednesdays to learn what Ophelia's Place is all about.

Showing up for youth is what Ophelia's Place does best.

### OP Inclusivity Statement

Ophelia's Place serves and welcomes girl-identifying youth of all races, religions, national origins, immigration status, sexual orientations, beliefs, sizes, abilities and economic status. Ophelia's Place also recognizes an expansive definition of girl. We are for all trans girls and cis girls, as well as for nonbinary youth, gender non-conforming youth, and genderqueer youth who feel or have a connection to girlhood or girlness.



"I think it's important to have a safe space like Ophelia's Place for girls and non-binary people. It's a place for girls to be who they are and express themselves."

-Lilly



**Don't take our word for it. Listen to OP girls explain the impacts of our services themselves. Watch now.**

# A Snapshot of OP Services



During 2021-2022, Ophelia's Place provided the following in Eugene, Junction City, Albany, and their surrounding communities:

**133**

girls participated in  
after-school  
activities

**1,335**

contacts with girls  
during after-school  
activities

**1,657**

therapy sessions  
with 130 individual  
youth

**76**

group therapy  
sessions with 150  
youth

**47**

school empowerment  
groups to 279  
youth

**114**

classroom  
presentations to  
2,556 students

**586**

attendees to  
professional  
development  
trainings

## The Ophelia's Place Land Acknowledgement

The lands on which Ophelia's Place carries out its mission are the traditional homelands of Kalapuya, Chelamela, and Tsankupi peoples many of whom are now citizens of the Confederated Tribes of Grand Ronde and the Confederated Tribes of Siletz Indians. They have lived harmoniously with these lands and water for countless generations before the onslaught of colonization. Like Indigenous Peoples across the Americas, they have experienced genocide, ethnic cleansing, theft of their land and waters, and forced removal. Our ability to live, work and enjoy this area is connected to their deep loss. Ophelia's Place resolves to invite the Kalapuyan, Chelamelan and Tsankupi peoples to share how OP can support their youth, to welcome them to join OP's staff, board, and community, and to continue listening and learning how we can build a shared, sustainable future for all. We ask all, including our governing bodies, to respect and to learn the true history of the lands on which we reside.

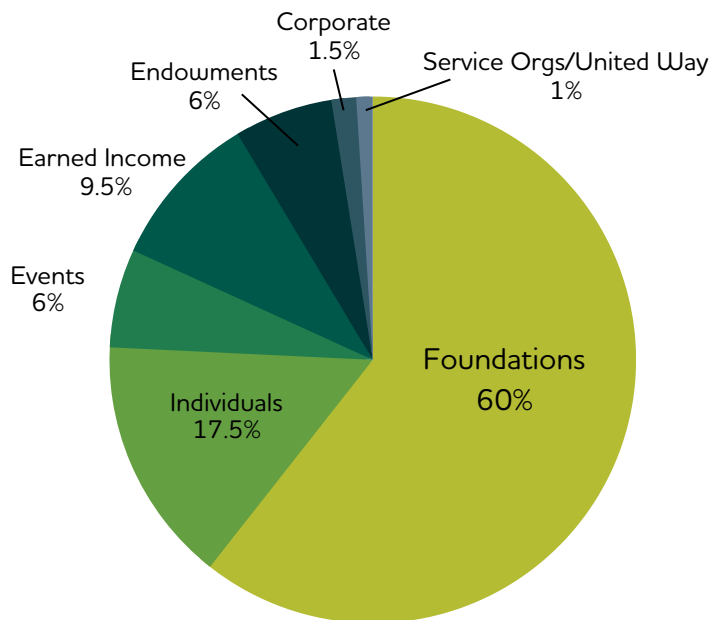
# A Snapshot Community Support

July 1, 2021- June 30, 2022

The bulk of Ophelia's Place's income is from the generous support of foundations and individuals. Ophelia's Place uses most of its funds to directly serve girls with after-school activities, therapy, empowerment groups, and more.

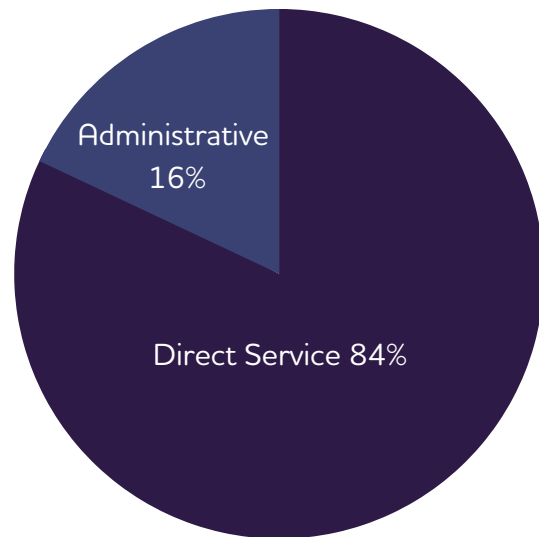
## 2021-22 Income

\$1,558,117.67



## 2021-22 Expenses

\$1,476,777.83



### OP Equity Statement

Ophelia's Place is committed to embedding equity and inclusion into all levels of our organizational framework and culture. We continue to outreach and collaborate with diverse communities in order to improve access and utilization of our services by marginalized youth. Through strategic planning and program development, we can enhance the quality and relevance of our services for diverse communities of youth. We envision a future in which girls of all backgrounds feel at home in Ophelia's Place and see themselves reflected throughout our organization. We are committed to ensuring all girls in our community feel safe, valued, and empowered, including those who are marginalized by experiences of oppression.



# Thank You to OP Supporters

Thank you to the individuals, organizations, foundations, and community members who help empower girls every day.

## Foundations

Bankoff Blanchet Family Foundation  
Bloomfield Family Foundation  
Chambers Family Foundation  
Charlotte Y. Martin Foundation  
Doris and Bill Scharpf Foundation  
Dr. Vern Katz  
EC Brown Foundation  
Elizabeth S. Holden Fund of Oregon  
Community Foundation (OCF)  
First Interstate BancSystem  
Foundation, Inc.  
Harris-Patton Family Foundation  
International Paper Foundation

Lane Werner Family Foundation  
Lynne and Sage Dorsey  
MDU Resources Foundation  
MJ Murdock Charitable Trust  
Norman and Olga Evelyn Wildish  
Fund of OCF  
Optimist Foundation of Albany  
Palma A. Domenico Fund of OCF  
Panorama Global Fund  
Poston Family Foundation  
R&M Clark Family Foundation  
Reed Family Foundation  
Roundhouse Foundation

The Chichester duPont Foundation  
The Evans/Kabush Family Foundation  
The Haugland Family Foundation  
The Mehlum Family Foundation  
The William M. and Carole R.  
Garnjobst Field of Interest Fund of OCF  
Union Pacific Foundation  
United Way of Lane County  
University of Oregon Foundation  
Verda M. Giustina Fund of OCF

## Organizations

44 Wealth Management  
Aaron Bloom Real Estate  
Active 20-30 Club of Eugene #920  
Albany Carousel  
Amanda Meg Photography  
Amazon Smile  
Ambrosia  
American Legion Auxiliary  
Albany Unit 10  
Blue Fish Studio  
Capella Market  
Chamber Music Amici  
Charles Beaudet  
CJ Steinbach  
Clackamas Education Service District  
Cottage Theater  
Elevation Bouldering Gym  
Enchanted Forest  
Eugene Ballet  
Eugene Concert Choir  
Eugene Science Center  
Eugene Symphony

First Story  
Fred Meyer  
Get Air Trampoline Park  
Grassroots Gynecology LLC  
Junction City Garden Club  
Junction City United  
Methodist Women  
Kroger  
Lane County  
Long Timber Brewing  
Mazzi's  
McClure Associates  
Northwest Community  
Credit Union  
OnPoint Community Credit Union  
Oregon Contemporary Theatre  
Pacific Benefit Consultants  
Peace Health  
Rainbow Valley Design and  
Construction  
Retirement Planning Group/  
Lincoln Financial

Roseburg Forest Products  
Sapient Private Wealth Management  
Services, LLC  
Sorooptimist International of  
Junction City  
St. Alban's Episcopal Church  
Sybaris Bistro  
Ta Ra Rin Thai Cuisine  
The Collective Beauty & Wellness  
The Raptor Center  
The Shedd Institute  
Thermo Fisher Scientific  
Timothy Breen  
Turell Group  
Very Little Theatre  
Vista Counseling  
Voorhees and Associates  
Walmart  
Westraunt Concepts  
Wildish Land Co.  
Wildlife Safari  
Willamalane Park & Recreation District

**Ophelia's Place is a 501c3 nonprofit. Its EIN number is 27-4675345. To learn how you can contribute to Ophelia's Place and the empowerment of girls, please call (541) 284-4333 or email [info@opheliasplace.net](mailto:info@opheliasplace.net).**

# The People Behind Ophelia's Place

## OP Staff



**Abby**  
Eugene Youth Program  
Coordinator



**Aloe**  
Rural School Program  
Coordinator



**Amanda**  
Youth Services Director



**Ana B.**  
Development Director



**Ana**  
Marriage & Family  
Therapist Associate



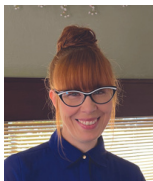
**Dawn**  
Administrative Director



**Hannah**  
Albany Youth Program  
Coordinator



**Itzel**  
Eugene Office  
Coordinator



**Jessica**  
Therapist and Clinical  
Director



**Laura**  
Executive Director



**Monique**  
Junction City Rural Youth  
Program Coordinator



**Nikki**  
Communications  
Coordinator



**Raevyn**  
Eugene School  
Program Coordinator



**Rikki**  
Professional Counselor  
Associate



**River**  
Training & Outreach  
Director



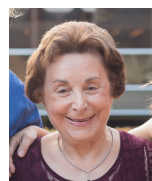
**Rose**  
Development  
Coordinator



**Teri**  
Communications  
Director



**Yuki**  
School Programs  
Director



**Rosaria Haugland**  
Founder

## OP Board of Directors

**Claudia Liontos**, *President*  
Real Estate Broker

**Margie Paris**, *VP & Secretary*  
Professor Emerita, UO School of Law

**Alex Haugland**, *Treasurer*  
Property Development, Philanthropist

**Allison Blizzard**  
CEO/Consultant, Global Analytics LLC,  
Albany

**Manica Collier**, *Student Board Member*  
UO Nonprofit Management Master's  
Program

**Fatemeh Fakhraie**  
Northwest Community Credit Union

**Craig Opperman**  
CEO Looking Glass

**Jordan Palmer**  
Youth Housing Advocate at the Native  
American Youth and Family Center

**Shanti Rios**  
Behavioral Health/Social Services,  
Cottage Grove

**Marc Steinbaugh**  
Umpqua Bank

**Faith Vawter**  
Education/Public Health, Corvallis

**Kathleen Wiley**  
Physician

**Celia Wright**  
Youth Programs, Eugene